

# MAFA BAGMASTER TF III

## Filling of big bags.

MAFA's filling system for big bags is available in several basic variants with a large selection of accessories to be able to be adapted to all customer needs. The systems are built with high quality and availability. MAFA has extensive experience in handling bulk products and offers customized powder handling equipment. The bagmaster systems are designed for a good and ergonomically correct working environment.

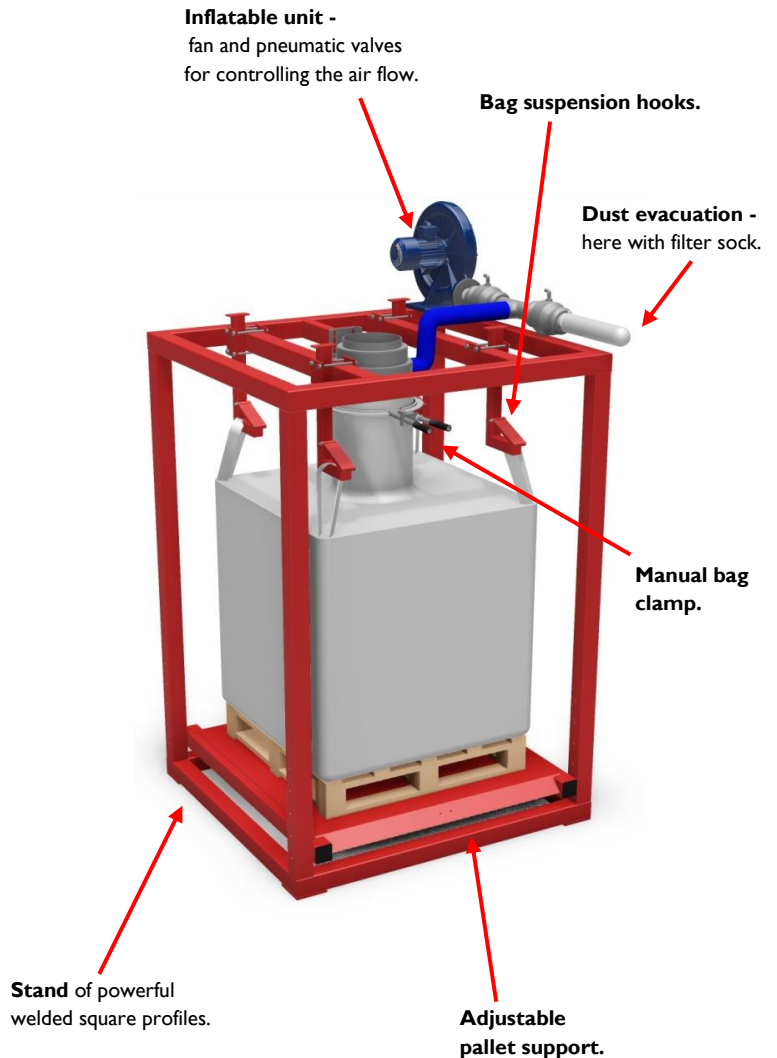
TF III is the big bag filler for 1-, 2- and 4-loop bags. TF, which stands for tube filler, are flexible bag fillers that meet most needs.

The flexibility of this bag filler means that it can be adapted to handle fluidized materials and materials with other difficult properties. If the bag height allows, no operator platform is required, which makes it easier for the operator and requires small space. The closed filling system achieves a dust-free and ergonomic environment for the operator.

The Big bag filler can be delivered in different models, from simple basic model **TF III BASIC** with a capacity of 15-25 bags / hour, to a more advanced facility **TF III ADVANCED** with high capacity. MAFA can also supply **TF III TWIN** and **TF III TELESCOPIC**.

The bag filler is available in normal steel, stainless steel, ATEX-classified, food approved etc.

**TF III BASIC** is a machine with great adaptability. The model contains the following basic components.



# MAFA®

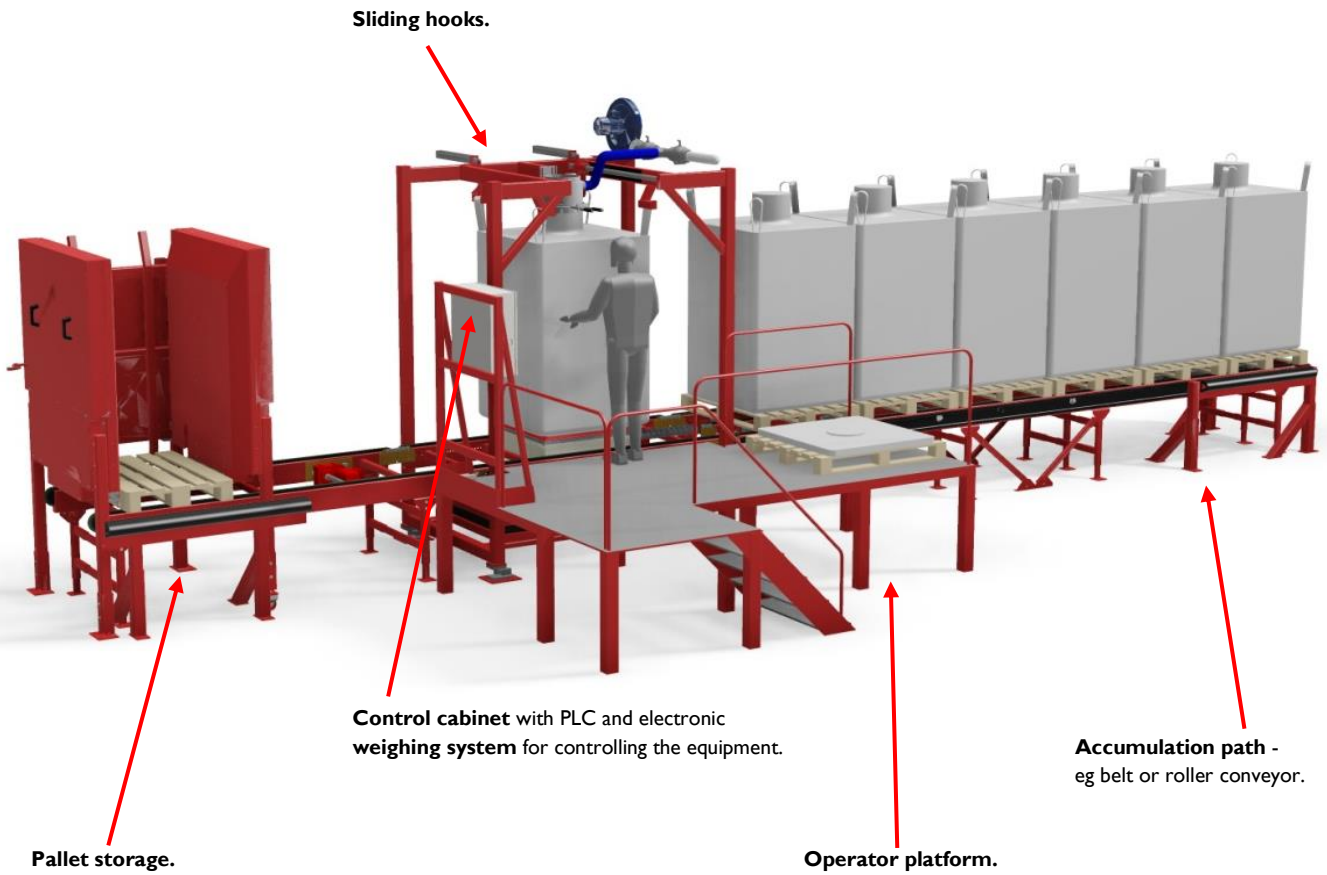
Reservation for typos. See quote for specific conditions. Version March 2016

Phone. +46 (0)43 1-44 52 60 • [www.mafa.se](http://www.mafa.se)

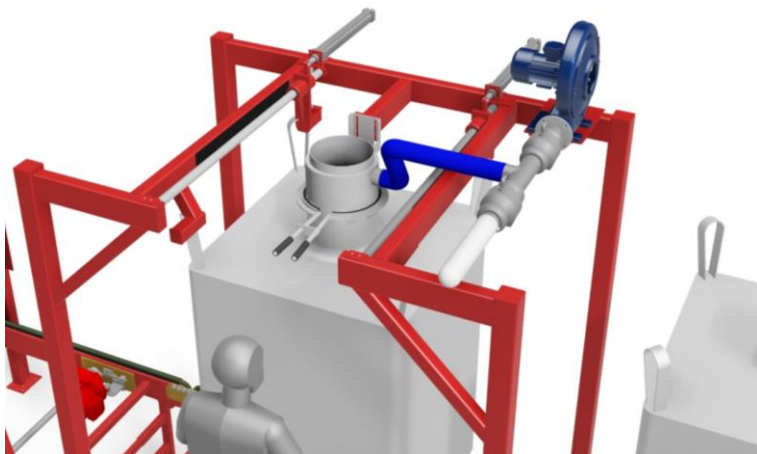


# MAFA BAGMASTER TF III

## TF III ADVANCED



Detail image - Sliding rear hooks for improved ergonomics.



# MAFA<sup>®</sup>

Reservation for typos. See quote for specific conditions. Version March 2016

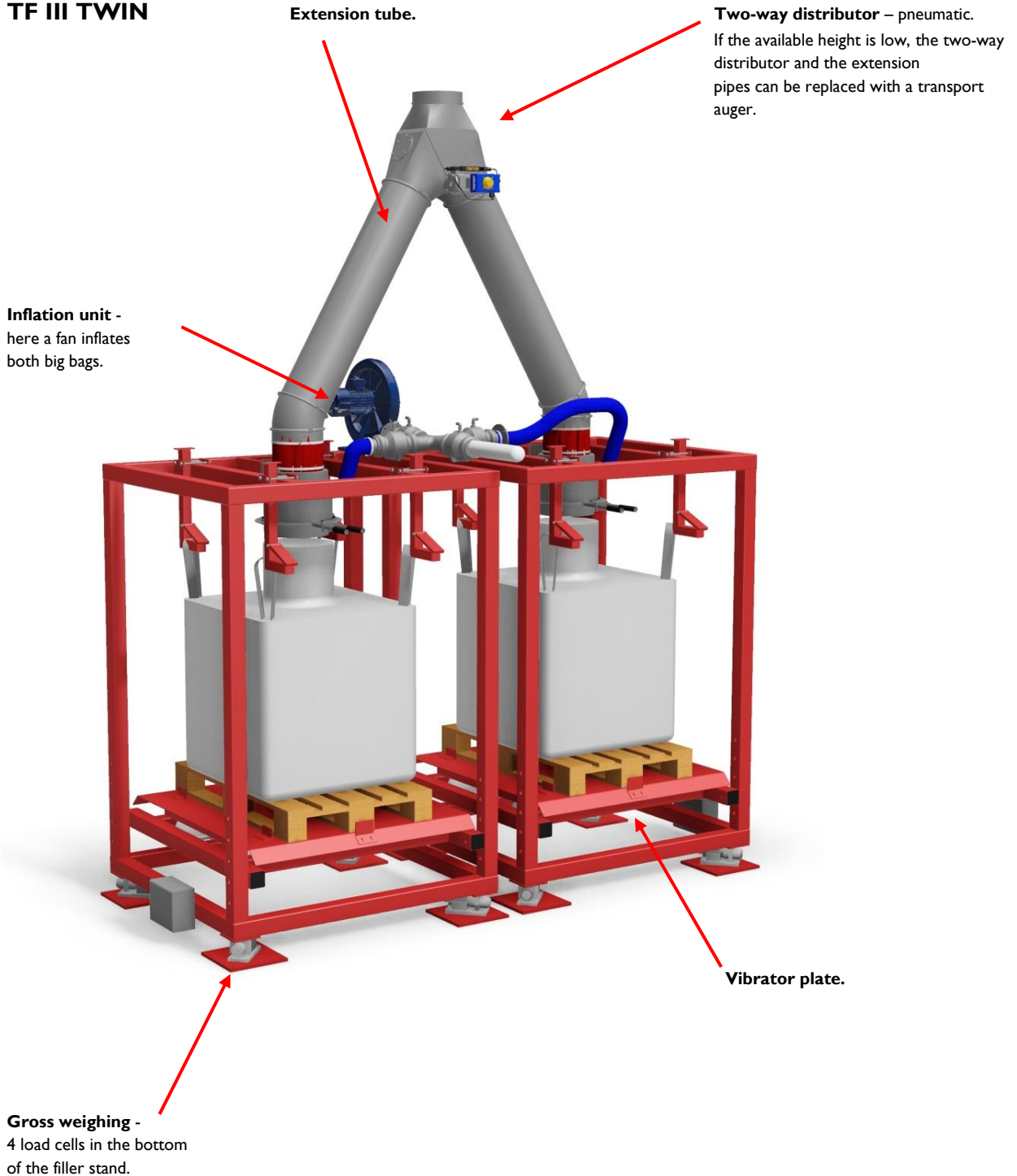
Phone. +46 (0)43 1-44 52 60 • [www.mafa.se](http://www.mafa.se)



# MAFA BAGMASTER TF III

TF III is available in different designs to adapt to the material and production. **TF III TWIN** and **TF III TELESCOPIC** are examples of specially adapted machines.

## TF III TWIN



Reservation for typos. See quote for specific conditions. Version March 2016

Phone. +46 (0)43 1-44 52 60 • [www.mafa.se](http://www.mafa.se)



# MAFA BAGMASTER TF III

## TF III TELESCOPIC

This big bag filler can also be used for single-loop bags. It is then a great advantage to use a telescopic filling tube that stabilizes the filling.



# MAFA<sup>®</sup>

Reservation for typos. See quote for specific conditions. Version March 2016

Phone. +46 (0)43 1-44 52 60 • [www.mafa.se](http://www.mafa.se)



# MAFA BAGMASTER TF III

## Examples of accessories for BAGMASTER TF III



### Manual bag clamp

Simple clamp for dust-free filling that is mounted on the filling pipe.



### Expander bellows

Quick and easy solution for dust-free filling. The bellows inflates after activation on the operator panel and seals the inlet nozzle and prevents material from coming out.



### Filter system

Filters are widely used where powder is handled. The choice of filter system depends on the application.



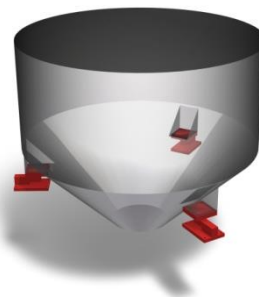
### Dosing damper

Pneumatically controlled, available as sliding or rotating damper for rough or highly accurate dosing.



### Gross weighing

Weighing system with four load cells. For gross weighing, the material is weighed only when it enters the packaging.



### Net weighing

Weighing system with three load cells. For net weighing, the material is weighed in a weighing container before the filling station. An advantage of net weighing is that the capacity will be higher than with gross weighing.

# MAFA®

Reservation for typos. See quote for specific conditions. Version March 2016

Phone. +46 (0)43 1-44 52 60 • [www.mafa.se](http://www.mafa.se)

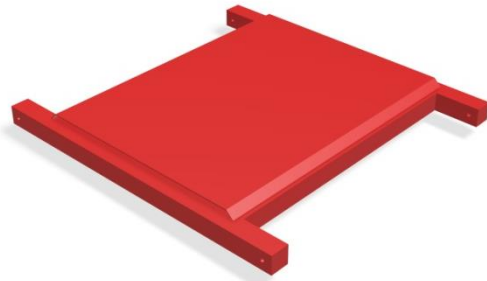


# MAFA BAGMASTER TF III



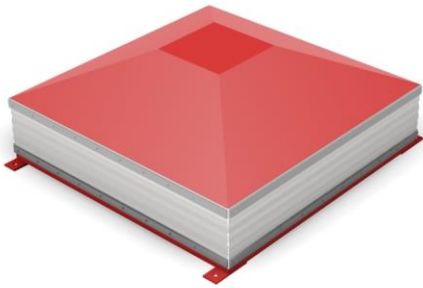
## Lifting table

Used to unhook the big bags. Placed in the bottom of the big bag filler. The lifting table is particularly suitable for accumulation tracks.



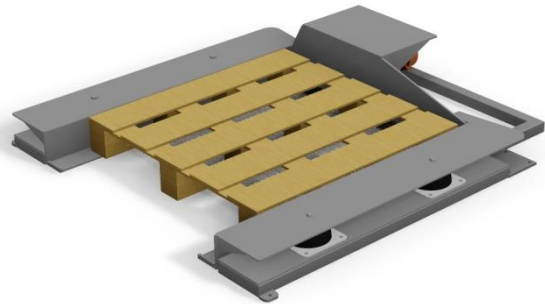
## Vibrator plate

Vibrator plate consists of a plate, vibrators and dampers that are mounted in the bottom support of the big bag filler. The support is adjusted so that it meets the bottom of the bag and vibrates the material during filling.



## Vibrator table conical

When filling fluidized and otherwise difficult-to-fill materials the machine is advantageously provided with a highly efficient vibrator table, which is placed in the lower part of the machine. The vibrator table compresses and compacts the material in the bag during the filling process, which provides a more stable bag and an even top angle.



## Low-built vibrator table

U-shaped with four mounting lugs in the floor. Adapted to pallet size. The table is mounted in the lower part of the machine and the operator places the pallet in the low-built vibrator table. Equipped with double vibrators for directional material movement. The pallet can be left and picked up with a pallet puller.

## Examples of equipment that MAFA can offer with all filling systems

- Auger conveyor • Vacuum conveyor • Pressure transmitter • Vibration feeder • Rotary feeder
- Level monitor • Metal detector • Sampler • Marking of big bag • Buffer container

# MAFA®

Reservation for typos. See quote for specific conditions. Version March 2016

Phone. +46 (0)43 1-44 52 60 • [www.mafa.se](http://www.mafa.se)